

4MBI600VC-120-50

IGBT Modules

IGBT Power Module (V series) 1200V/600A/IGBT, 4-in-1 package

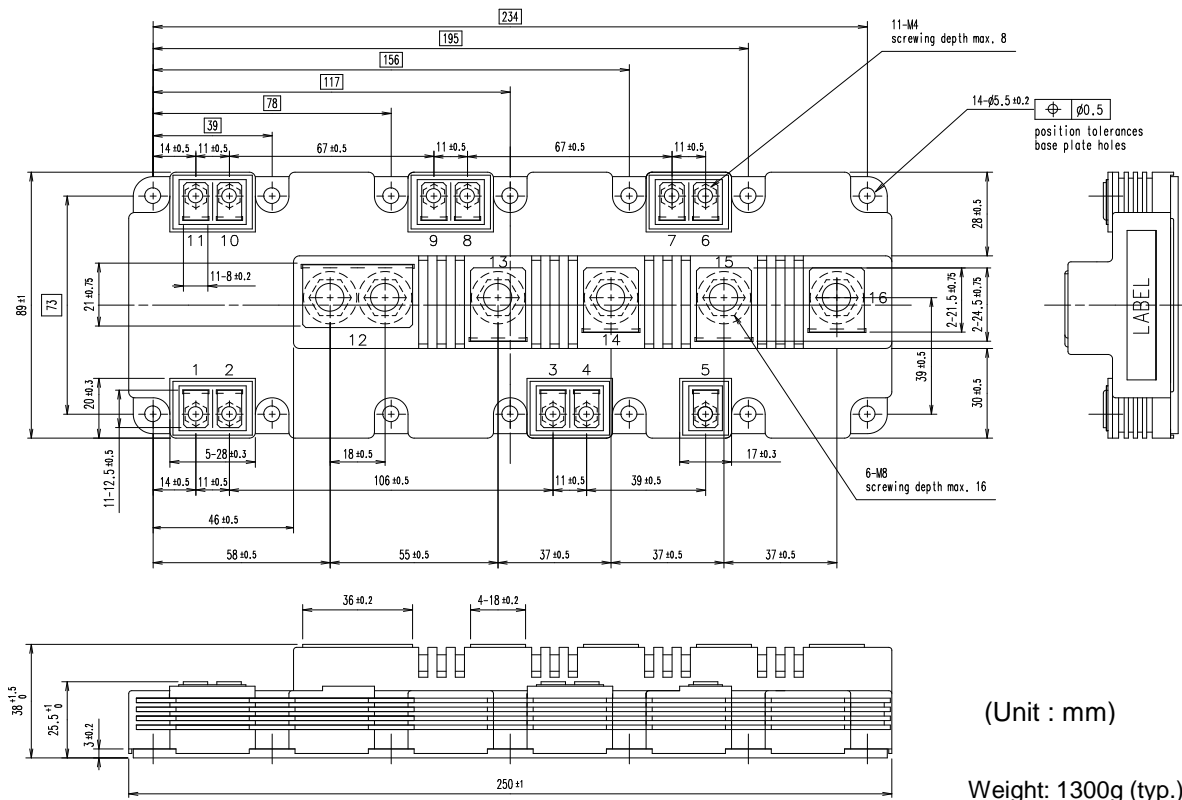
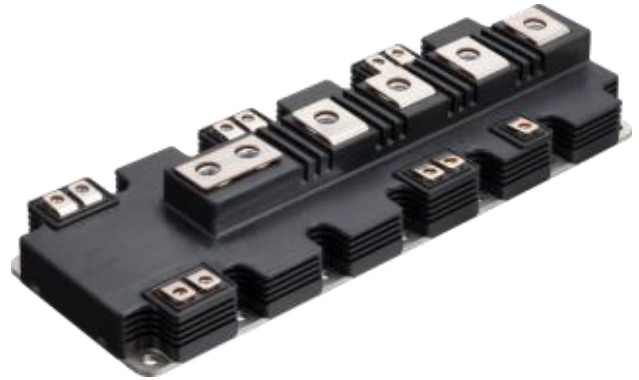
■ **Features**

- Higher efficiency
- Standard I-type 3-level circuit
- Low inductance module structure

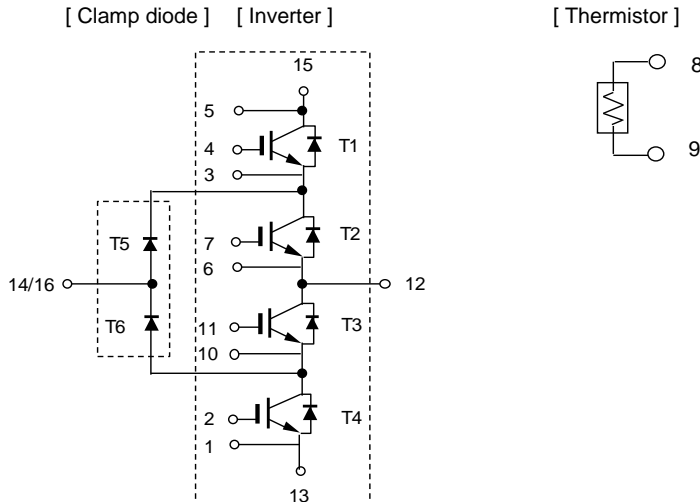
■ **Applications**

- Inverter for motor drive
- Uninterruptible power supply
- Power conditioner for PV, Wind turbine

■ **Outline drawing**



■ **Equivalent Circuit**



4MBI600VC-120-50

IGBT Modules
■ Absolute Maximum Ratings (at $T_c = 25^\circ\text{C}$ unless otherwise specified)

Item		Symbol	Condition	Maximum Rating	Unit		
Inverter	Collector-Emitter voltage	V_{CES}		1200	V		
	Gate-Emitter voltage	V_{GES}		± 20	V		
	Collector current	IGBT	I_C	Continuous	$T_c = 25^\circ\text{C}$	800	A
					$T_c = 100^\circ\text{C}$ Duty=82%	600	
		FWD	$-I_C$	1ms		1200	
						600	
Collector power dissipation	P_C	1 device	2460	W			
Clamp diode	Repetitive peak reverse voltage	V_R		1200	A		
	Forward current	FWD	I_F	600			
			I_F pulse	1ms		1200	
Junction temperature		T_{vj}		175	$^\circ\text{C}$		
Operating junction temperature (under switching conditions)		T_{vjop}		150			
Case temperature		T_c		125			
Storage temperature		T_{stg}		-40 ~ 125			
Isolation voltage	between terminal and copper base between thermistor and others (*2)	V_{iso}	AC: 1min.	4000	Vrms		
Screw	Mounting	-	M5	6.0	N m		
Torque (*3)	Main terminals	-	M8	10.0			
	Sense terminals	-	M4	2.1			

(*1) All terminals should be connected together during the test.

(*2) Two thermistor terminals should be connected together, other terminals should be connected together and shorted to base plate during the test.

(*3) Recommended value : Mounting 3.0 ~ 6.0 Nm (M5)
 Recommended value : Main Terminals 8.0 ~ 10.0 Nm (M8)
 Recommended value : Sense Terminals 1.8 ~ 2.1 Nm (M4)

4MBI600VC-120-50

IGBT Modules

■ Electrical characteristics (at $T_{vj}= 25^{\circ}\text{C}$ unless otherwise specified)

Item	Symbol	Condition	Characteristics			Units		
			min.	typ.	max.			
Inverter	Zero gate voltage Collector current	I_{CES}	$V_{GE} = 0V$ $V_{CE} = 1200V$	-	-	3.0	mA	
	Gate-Emitter leakage current	I_{GES}	$V_{CE} = 0V$ $V_{GE} = \pm 20V$	-	-	600	nA	
	Gate-Emitter threshold voltage	$V_{GE(th)}$	$V_{CE} = 20V$ $I_C = 600mA$	6.0	6.5	7.0	V	
	Collector-Emitter saturation voltage	$V_{CE(sat)}$ (chip)	$V_{GE} = 15V$ $I_C = 600A$	$T_{vj}=25^{\circ}\text{C}$	-	1.85	2.10	V
				$T_{vj}=125^{\circ}\text{C}$	-	2.20	-	
				$T_{vj}=150^{\circ}\text{C}$	-	2.25	-	
		$V_{CE(sat)}$ (terminal)	$V_{GE} = 15V$ $I_C = 600A$	$T_{vj}=25^{\circ}\text{C}$	-	1.95	-	
	$T_{vj}=125^{\circ}\text{C}$	-		2.30	-			
	$T_{vj}=150^{\circ}\text{C}$	-	2.35	-				
	Internal gate	$R_{G(int)}$	-	-	1.25	-	Ω	
	Input capacitance	C_{ies}	$V_{CE}=10V, V_{GE}=0V, f=1MHz$	-	50	-	nF	
	Turn-on time	t_{on}	SW mode : A, B $V_{CC} = 750V$ $I_C = 600A$	-	0.45	-	μs	
				t_r	-	0.15		-
				$t_{r(i)}$	-	0.05		-
	Turn-off time	t_{off}	$V_{GE} = \pm 15V$ $R_G = +1.2/-0.56\Omega, L_s=15nH$	-	0.70	-	μs	
t_f				-	0.10	-		
Forward on voltage	V_F (chip)	$I_F = 600A$	$T_{vj}=25^{\circ}\text{C}$	-	1.70	1.95	V	
			$T_{vj}=125^{\circ}\text{C}$	-	1.85	-		
			$T_{vj}=150^{\circ}\text{C}$	-	1.80	-		
	V_F (terminal)	$I_F = 600A$	$T_{vj}=25^{\circ}\text{C}$	-	1.75	-		
$T_{vj}=125^{\circ}\text{C}$	-		1.90	-				
$T_{vj}=150^{\circ}\text{C}$	-	1.85	-					
Reverse recovery time	t_{rr}	Switching mode: B $V_{CC} = 750V, I_F = 600A$ $V_{GE} = \pm 15V, R_G = +1.2/-0.56\Omega$	-	0.15	-	μs		
Clamp diode	Reverse leakage current	I_R	$V_R=1200V$	-	-	3.0	mA	
	Forward on voltage	V_F (chip)	$I_F = 600A$	$T_{vj}=25^{\circ}\text{C}$	-	1.70	1.95	V
				$T_{vj}=125^{\circ}\text{C}$	-	1.85	-	
				$T_{vj}=150^{\circ}\text{C}$	-	1.80	-	
		V_F (terminal)	$I_F = 600A$	$T_{vj}=25^{\circ}\text{C}$	-	1.80	-	
$T_{vj}=125^{\circ}\text{C}$	-	1.95		-				
$T_{vj}=150^{\circ}\text{C}$	-	1.90	-					
Reverse recovery time	t_{rr}	Switching mode: A $V_{CC} = 750V, I_F = 600A$ $V_{GE} = \pm 15V, R_G = +1.2/-0.56\Omega$	-	0.15	-	μs		
Thermistor	Resistance	R	$T=25^{\circ}\text{C}$	-	5000	-	Ω	
	$T=100^{\circ}\text{C}$	465	495	520				
B Value	B	$T=25/50^{\circ}\text{C}$	3305	3375	3450	K		

■ Thermal resistance characteristics

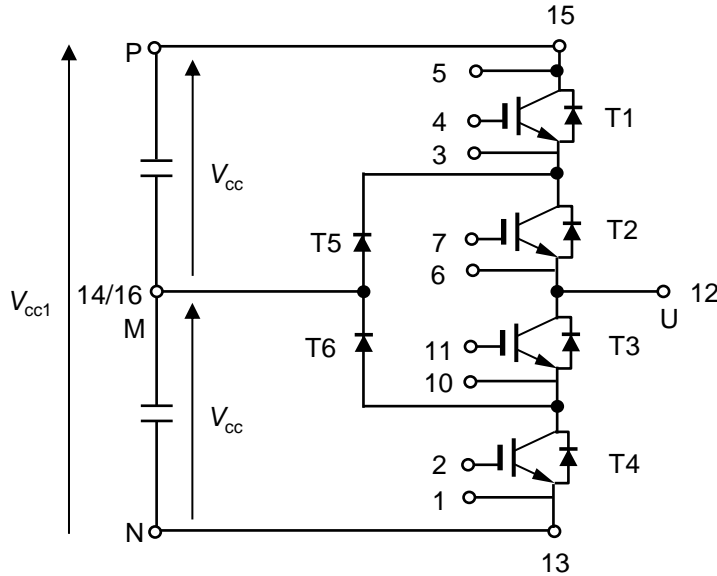
Item	Symbol	Condition	Characteristics			Units
			min.	typ.	max.	
Thermal resistance (1device)	$R_{th(j-c)}$	Inverter-IGBT	-	-	0.061	$^{\circ}\text{C/W}$
		Inverter-FWD	-	-	0.092	
		Clamp diode-FWD	-	-	0.092	
Contact thermal resistance (1device) (*1)	$R_{th(c-f)}$	with Thermal Compound	-	0.0167	-	$^{\circ}\text{C/W}$

(*1) This is the value which is defined mounting on the additional cooling fin with thermal compound.
(thermal conductivity = $1W/m \cdot k$)

4MBI600VC-120-50

IGBT Modules

Definitions of on-stage voltage at terminal and switching characteristics

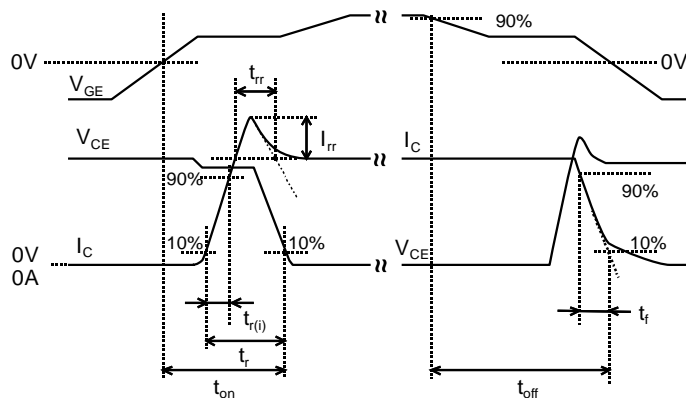


$V_{CE(sat)}/V_F$ values are measured between sense 5 and sense 3 for T1 arm, sense 3 and sense 6 for T2 arm, sense 6 and sense 10 for T3 arm, sense 10 and sense 1 for T4 arm, sense 14 and sense 3 for T5 arm and sense 10 and sense 14 for T6 arm.

SW mode	Load L	T1	T2	T3	T4
A	M-U	SW	ON	OFF	OFF
	M-U	OFF	OFF	ON	SW
B	U-N	OFF	SW	OFF	OFF
	P-U	OFF	OFF	SW	OFF

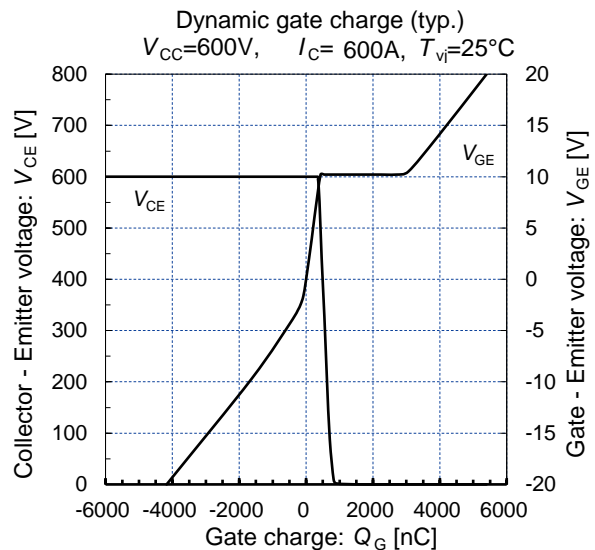
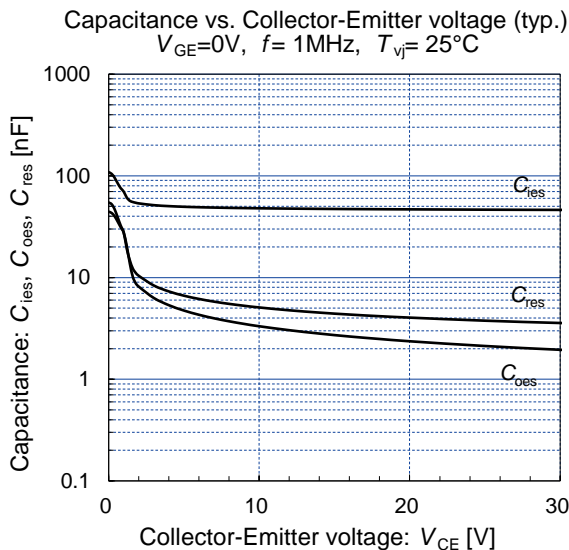
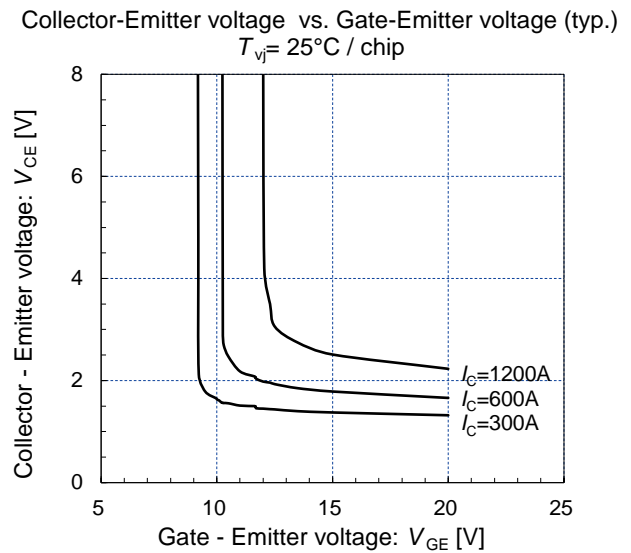
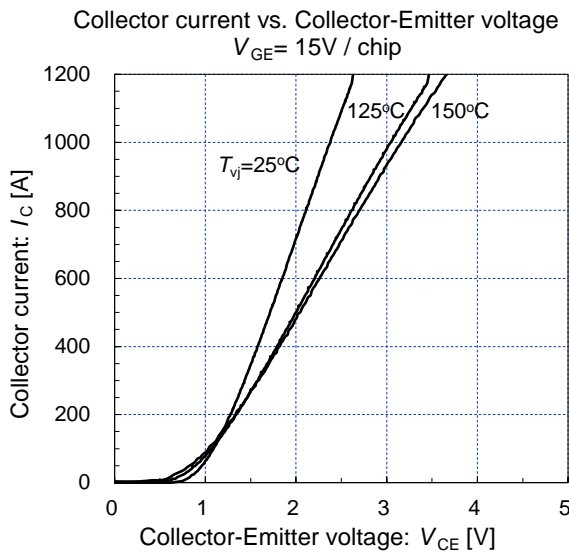
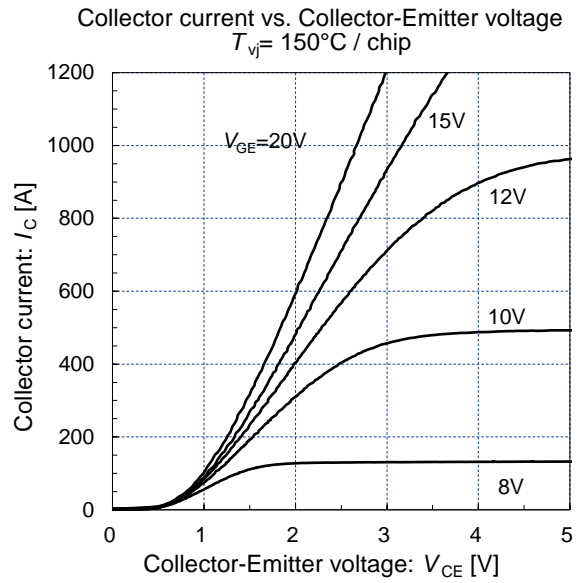
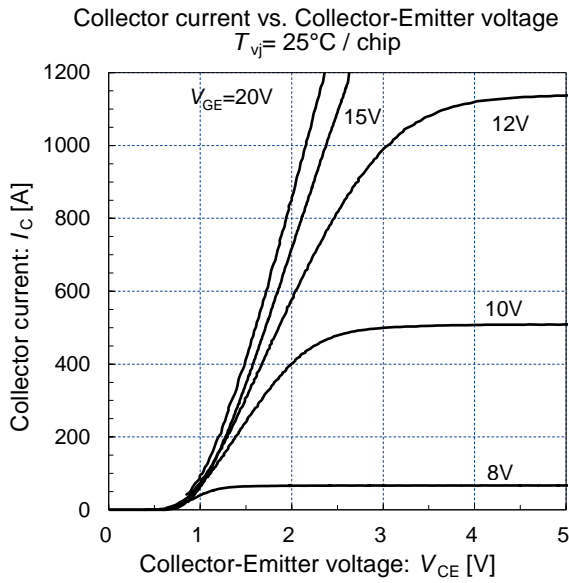
SW: Connect to drive circuit and input gate signal
 ON: Bias voltage of gate +15V
 OFF: Reverse bias voltage of gate -15V
 $V_{cc1}=2 \times V_{cc}$

Definitions of switching time



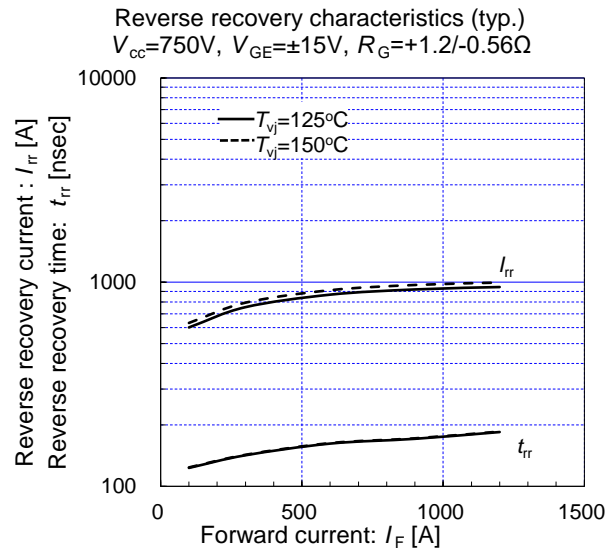
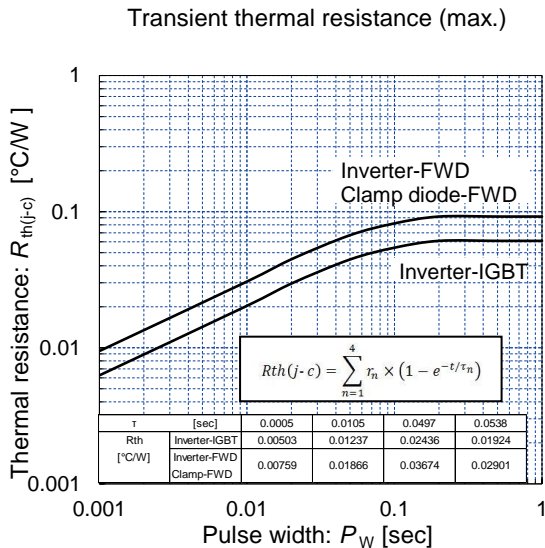
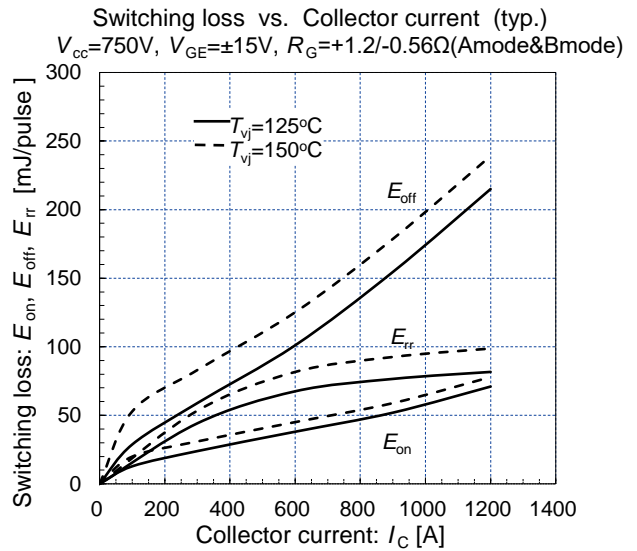
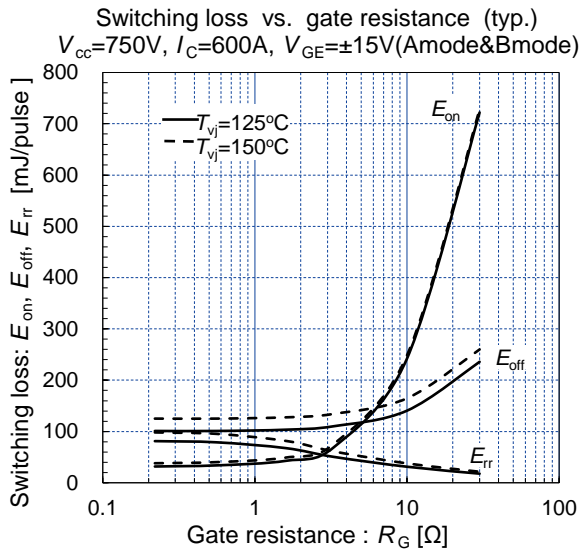
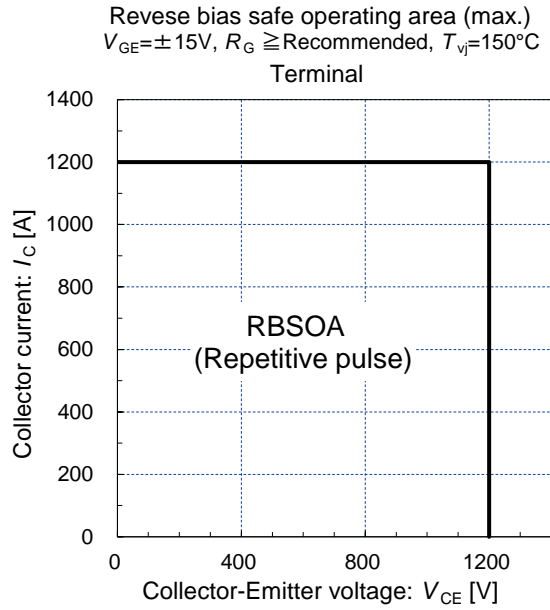
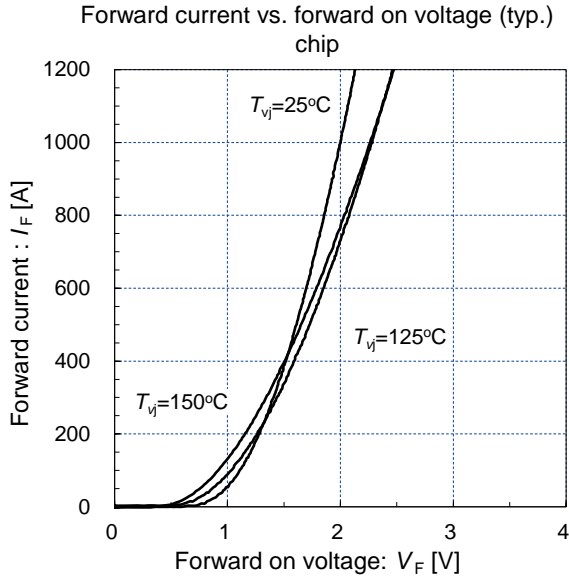
4MBI600VC-120-50

IGBT Modules



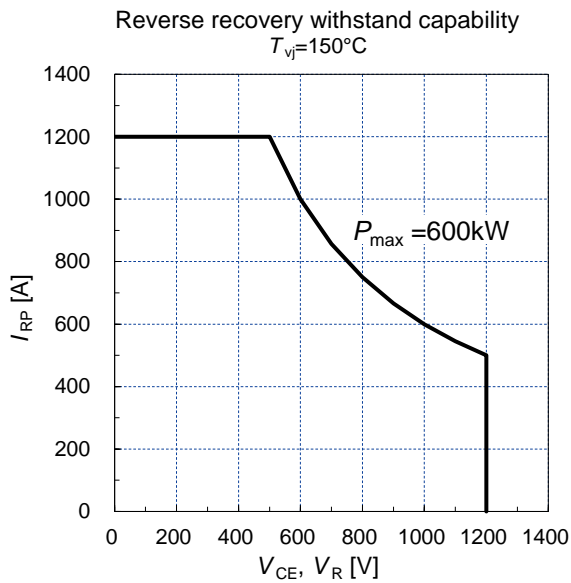
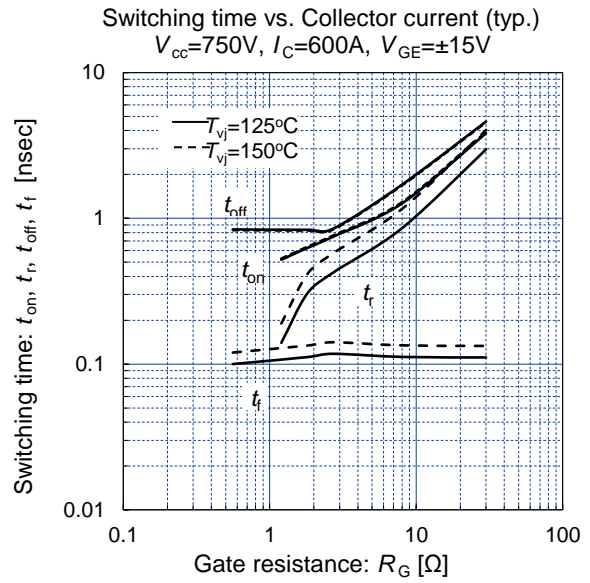
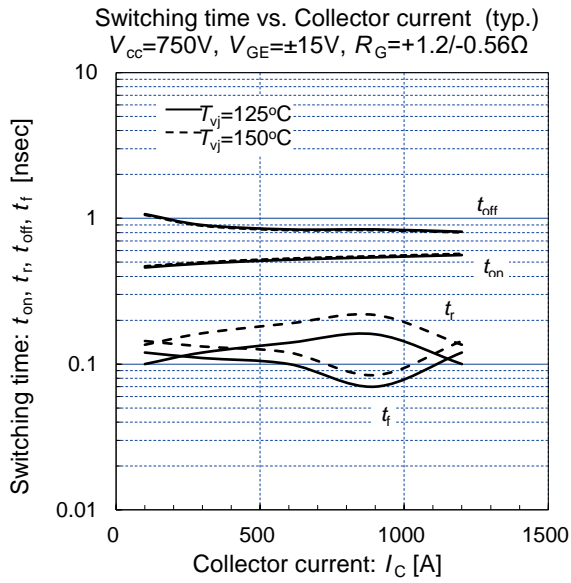
4MBI600VC-120-50

IGBT Modules



4MBI600VC-120-50

IGBT Modules



V_{CE}, V_R are measured between :

- sense 5 and 6 for T1&T2
- sense 6 and 1 for T3&T4
- sense 14 and 3 for T5
- sense 10 and 14 for T6

Warnings

1. This Catalog contains the product specifications, characteristics, data, materials, and structures as of 5/2019. The contents are subject to change without notice for specification changes or other reasons. When using a product listed in this Catalog, be sure to obtain the latest specifications.
2. All applications described in this Catalog exemplify the use of Fuji's products for your reference only. No right or license, either express or implied, under any patent, copyright, trade secret or other intellectual property right owned by Fuji Electric Co., Ltd. is (or shall be deemed) granted. Fuji Electric Co., Ltd. makes no representation or warranty, whether express or implied, relating to the infringement or alleged infringement of other's intellectual property rights which may arise from the use of the applications described herein.
3. Although Fuji Electric Co., Ltd. is enhancing product quality and reliability, a small percentage of semiconductor products may become faulty. When using Fuji Electric semiconductor products in your equipment, you are requested to take adequate safety measures to prevent the equipment from causing a physical injury, fire, or other problem if any of the products become faulty. It is recommended to make your design fail-safe, flame retardant, and free of malfunction.
4. The products introduced in this Catalog are intended for use in the following electronic and electrical equipment which has normal reliability requirements.
 - Computers ·OA equipment ·Communications equipment (terminal devices) ·Measurement equipment
 - Machine tools ·Audiovisual equipment ·Electrical home appliances ·Personal equipment ·Industrial robots etc.
5. If you need to use a product in this Catalog for equipment requiring higher reliability than normal, such as for the equipment listed below, it is imperative to contact Fuji Electric Co., Ltd. to obtain prior approval. When using these products for such equipment, take adequate measures such as a backup system to prevent the equipment from malfunctioning even if a Fuji's product incorporated in the equipment becomes faulty.
 - Transportation equipment (mounted on cars and ships) ·Trunk communications equipment
 - Traffic-signal control equipment ·Gas leakage detectors with an auto-shut-off feature
 - Emergency equipment for responding to disasters and anti-burglary devices ·Safety devices ·Medical equipment
6. Do not use products in this Catalog for the equipment requiring strict reliability such as the following and equivalents to strategic equipment (without limitation).
 - Space equipment ·Aeronautic equipment ·Nuclear control equipment ·Submarine repeater equipment
7. Copyright (c)1996-2019 by Fuji Electric Co., Ltd. All rights reserved.
No part of this Catalog may be reproduced in any form or by any means without the express permission of Fuji Electric Co., Ltd.
8. If you have any question about any portion in this Catalog, ask Fuji Electric Co., Ltd. or its sales agents before using the product. Neither Fuji Electric Co., Ltd. nor its agents shall be liable for any injury caused by any use of the products not in accordance with instructions set forth herein.

Technical Information

IGBT Modules

- Please refer to URLs below for further information about products, application manuals and design support.
- 关于本规格书中没有记载的产品信息，应用手册，技术信息等，请参考以下链接。
- 本データシートに記載されていない製品情報，アプリケーションマニュアル，デザインサポートは以下の URL をご参照下さい。

FUJI ELECTRIC Power Semiconductor WEB site

日本	www.fujielectric.co.jp/products/semiconductor/
Global	www.fujielectric.com/products/semiconductor/
中国	www.fujielectric.com.cn/products/semiconductor/
Europe	www.fujielectric-europe.com/en/power_semiconductor/
North America	www.americas.fujielectric.com/products/semiconductors/

Information

日本

1 半導体総合カタログ	www.fujielectric.co.jp/products/semiconductor/catalog/
2 製品情報	www.fujielectric.co.jp/products/semiconductor/model/
3 アプリケーションマニュアル	www.fujielectric.co.jp/products/semiconductor/model/igbt/application/
4 デザインサポート	www.fujielectric.co.jp/products/semiconductor/model/igbt/technical/
5 マウンティングインストラクション	www.fujielectric.co.jp/products/semiconductor/model/igbt/mounting/
6 IGBT 損失シミュレーションソフト	www.fujielectric.co.jp/products/semiconductor/model/igbt/simulation/
7 富士電機技報	www.fujielectric.co.jp/products/semiconductor/journal/
8 製品のお問い合わせ	www.fujielectric.co.jp/products/semiconductor/contact/
9 改廃のお知らせ	www.fujielectric.co.jp/products/semiconductor/discontinued/

Global

1 Semiconductors General Catalog	www.fujielectric.com/products/semiconductor/catalog/
2 Product Information	www.fujielectric.com/products/semiconductor/model/
3 Application Manuals	www.fujielectric.com/products/semiconductor/model/igbt/application/
4 Design Support	www.fujielectric.com/products/semiconductor/model/igbt/technical/
5 Mounting Instructions	www.fujielectric.com/products/semiconductor/model/igbt/mounting/
6 IGBT Loss Simulation Software	www.fujielectric.com/products/semiconductor/model/igbt/simulation/
7 Fuji Electric Journal	www.fujielectric.com/products/semiconductor/journal/
8 Contact	www.fujielectric.com/contact/
9 Revised and discontinued product information	www.fujielectric.com/products/semiconductor/discontinued/

中国

1 半导体综合目录	www.fujielectric.com.cn/products/semiconductor/catalog/
2 产品信息	www.fujielectric.com.cn/products/semiconductor/model/
3 应用手册	www.fujielectric.com.cn/products/semiconductor/model/igbt/application/
4 技术信息	www.fujielectric.com.cn/products/semiconductor/model/igbt/technical/
5 安装说明书	www.fujielectric.com.cn/products/semiconductor/model/igbt/mounting/
6 IGBT 损耗模拟软件	www.fujielectric.com.cn/products/semiconductor/model/igbt/simulation/
7 富士电机技报	www.fujielectric.com.cn/products/semiconductor/journal/
8 产品咨询	www.fujielectric.com/contact/
9 产品更改和停产信息	www.fujielectric.com.cn/products/semiconductor/discontinued/